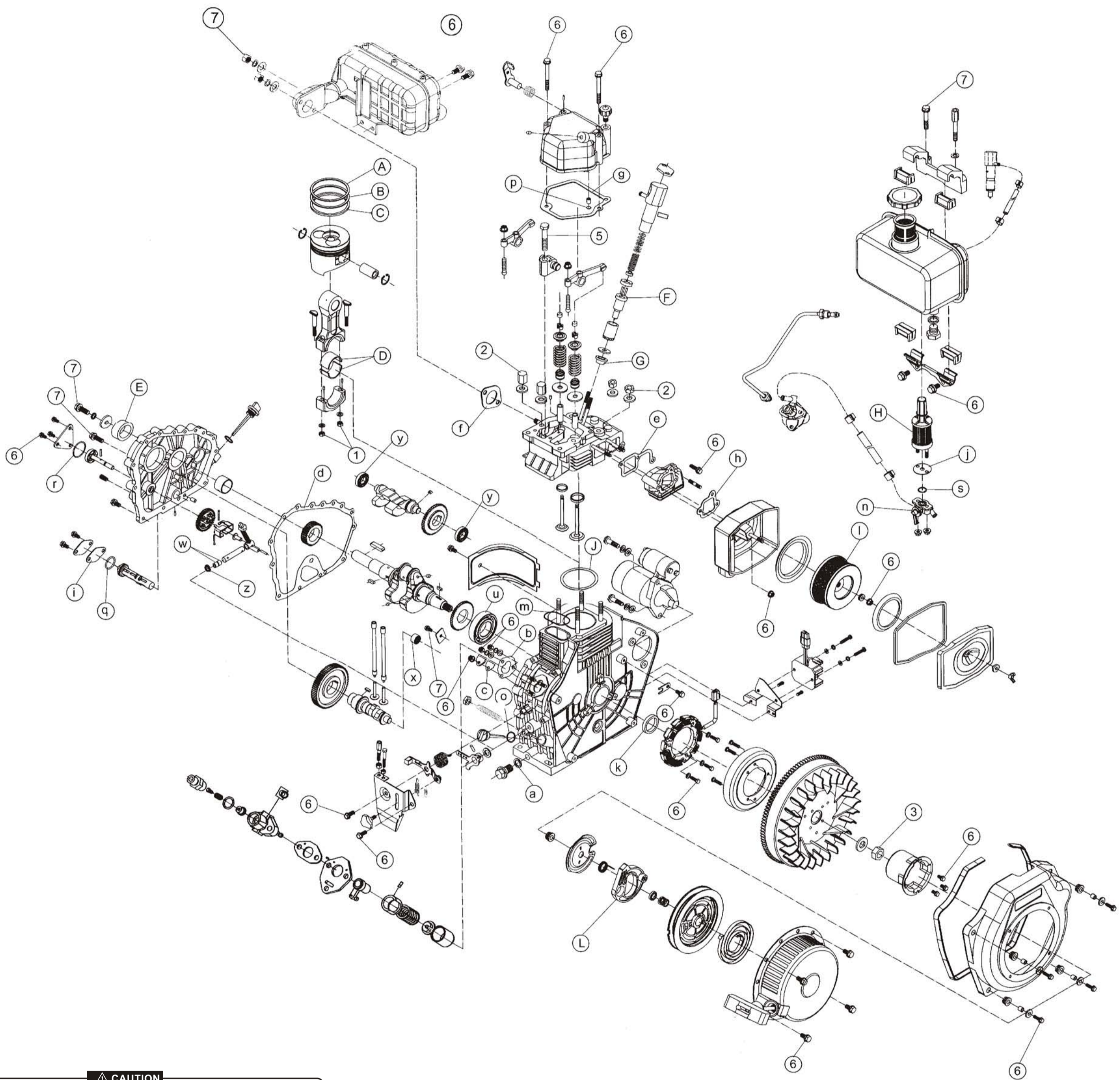


This catalog covers:
KM170

PARTS CATALOG

AIR-COOLED DIESEL ENGINE KM170



CAUTION

The structure presented in this part catalog may be different somewhat from our improved types in future. Then you'd better refer parts catalog to the operation manual when using.

HOW TO START

CAUTION

1. Use only diesel fuel. 2. Use only diesel oil. 3. Check the oil level before starting. 4. Do not touch the engine when it is hot. 5. Read the operation manual carefully before starting the engine.

READ MANUAL CAREFULLY BEFORE OPERATION

DANGER

WARNING

DIESEL

WARNING: EXTREMELY FLAMMABLE

TAGS

Ref No.	Part No.	Description	Qty.
1	KM168F-18003	Trademark Tag I	1
2	KM168F-18004	Starting Operation Tag	1
3	KM168F-18005	Caution Tag	1
4	KM170F-18007	Model Tag II	1
5	KM168F-18009	Warning Tag	1
6	KM168F-18012	Air Cleaner Tag	1
7	KM168F-18013	Air Cleaner Tag	1

EASY DESTROYED PARTS

Ref No.	Part No.	Description	Qty.	Mounted to
A	KM170F-04001	First Air Ring	1	(4)Piston & Connecting Rod Assem
B	KM170F-04002	Second Air Ring	1	(4)Piston & Connecting Rod Assem
C	KM170F-04100	Oil Ring Unit	1	(4)Piston & Connecting Rod Assem
D	KM168F-04005	Connecting Rod Bushing	2	(4)Piston & Connecting Rod Assem
E	GB/T9877.1-1988	Oil Seal SG25 × 42 × 8(front)	1	(1)Cylinder Block Assem
F	KM170F-13100	Nozzle	1	(8)Fuel Injection Valve Assem
G	KM168F-02011	Heat Insulator	1	(2)Cylinder Head Assem
H	KM168F-10300	Element Unit	1	(11)Fuel System
I	KM168F-07100	Air Cleaning Element Unit	1	(7)Air Intake System
J	KM170F-01013	Cylinder Head Gasket	1	(1)CylinderBlock Assem.
K	GB/T9877.1-1988	Oil Seal SG30 × 45 × 8(rear)	1	(1)CylinderBlock Assem.
L	KM168F-14001	Ratchet	1	(14)Manual Starting Assem.

RINGS

Ref No.	Part No.	Description	Qty.
m	KM168F-01008	Sheet Gasket	1
n	GB/T1235-1976	O-Ring 11 × 1.9	1
o	GB/T1235-1976	O-Ring 22.5 × 2.4	2
p	GB/T1235-1976	O-Ring 12 × 1.9	1
q	GB/T1235-1976	O-Ring 25 × 2.4	1
r	GB/T3452.1-1992	O-Ring 34 × 1.8	1
s	GB/T3452.1-1992	O-Ring 13.2 × 1.8	1

FASTENING TORQUE OF MAIN BOLTS & NUTS

Ref No.	Description	Torque
①	Connecting Rod Nut	18-21
②	Cylinder Head Nut	28-32
③	Flywheel Nut	100-120
④	Nozzle Retainer Nut	10-12
⑤	Set Bolt of Rocker Arm Seat	20-23
⑥	Standard Bolt / Nut M6	10-12
⑦	Standard Bolt / Nut M8	18-20

BEARINGS

Ref No.	Part No.	Description	Qty.
u	GB/T276-1994	Ball Bearing 6306/P5	1
w	GB/T290-1989	Needle Bearing 7941/8	2
x	GB/T290-1989	Needle Bearing HK1512	1
y	GB/T276-1994	Ball Bearing 6202/P5	2

OIL SEAL

Ref No.	Part No.	Description	Qty.
z	KM168F-11008	Lever Shaft Oil Seal	1

WASHER KIT

Ref No.	Part Number	Description	Qty.
a	KM168F-01100	Washer Unit of Drain Plug	1
b	KM168F-10014	Fuel Injection Pump Washer	2-3
c	KM168F-10016	Joint Washer	1
d	KM168F-01015	Crankcase Cover Washer	1
e	KM168F-02014	Intake Pipe Washer	1
f	KM168F-02015	Muffler Washer	1
g	KM168F-03003	Cylinder Head Cover Washer	1
h	KM168F-07001	Air Cleaner Washer	1
i	KM168F-09002	Washer of Engine Oil Filter Cover Board	1
j	KM168F-10007	Fuel Filter Washer	1

KIPOR POWER CO., LTD.

11/F Suntime International Mansion, 450 Fushan Road, Pudong, Shanghai, China
TEL: 86-21-58208881 FAX: 86-21-58208877

