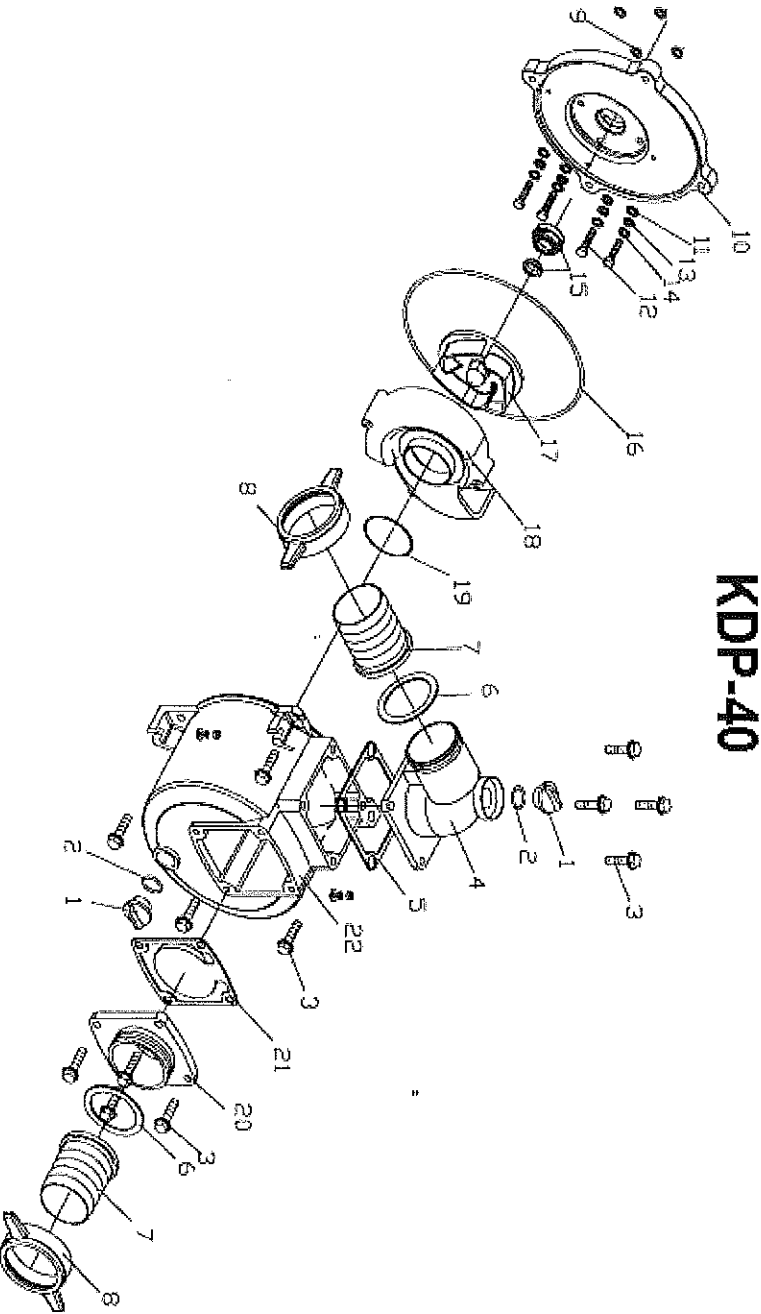


# KDP-40



Nº	REFERENCIA	DESCRIPCION MATERIAL	Nº	REFERENCIA	DESCRIPCION MATERIAL
1	KA100KB01013	TAPON CEBADOR KDP-40	12	KA100KB01018	TORNILLO M8X50
2	KA100KB01010	TORICA TAPON CEBADOR KDP-40	13	KA50KBZ01015	TORICA TORNILLO ACOPLE MOTOR
3	KA100KB01017	TORNILLO M10X30	14	KA80KBZ01012	ARANDELA D.8
4	KA100KB01006	TAPA IMPULSION KDP-40	15	KA100KB01100	ESTOPADA KDP-40
5	KA100KB01007	JUNTA TAPA IMPULSION KDP-40	16	KA100KB01005	TORICA CUERPO BOMBA KDP-40
6	KA100KB01009	JUNTA RACOR KDP-40	17	KA100KB01004	TURBINA ROSCADA KDP-40
7	KA100KB01011	RACOR KDP-40	18	KA100KB01003	DIFUSOR TURBINA KDP-40
8	KA100KB01008	TUERCA RACOR KDP-40	19	KA100KB01014	TORICA DIFUSOR KDP-40
9	KA50KBZ01015	ARANDELA AJUSTE TAPA ACOPLE	20	KA100KB01012	TAPA ASPIRACION KDP-40
10	KA100KB01001	TAPA ACOPLE MOTOR KDP-40	21	KA100KB01200	JUNTA VALVULA KDP-40
11	KA80KBZ01012	ARANDELA D.8	22	KA100KB01002	CUERPO BOMBA KDP-40