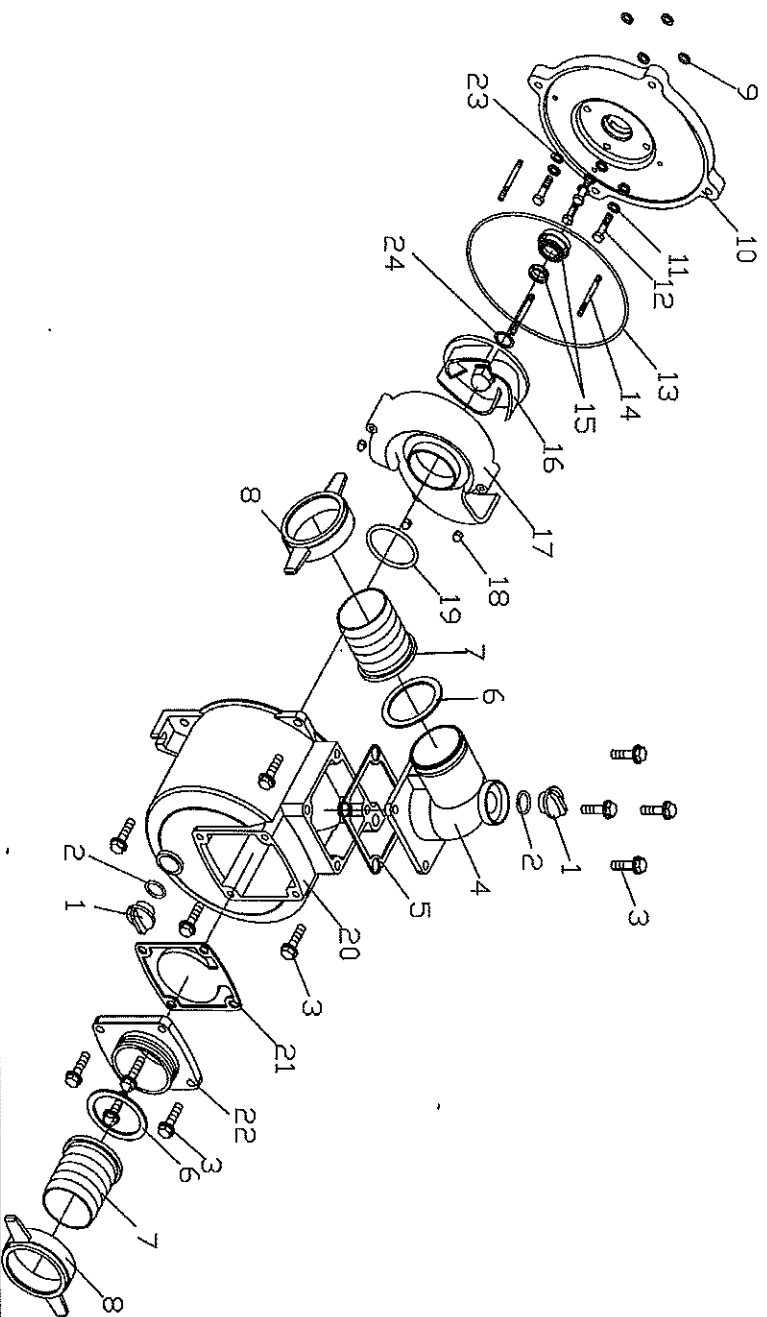


KGP-30 / KDP30



Nº	REFERENCIA	DESCRIPCION MATERIAL	Nº	REFERENCIA	DESCRIPCION MATERIAL
1	KA50KBZ01012	TAPON DE CEBADO KGP-20/30	13	KA80KBZ01016	TORICA CUERPO BOMBA KGP-30
2	KA50KBZ01020	TORICA TAPON CEBADO	14	KA50KBZ01023	ESPARRAGO M6X50
3	KA50KBZ01010	TORNILLO M8X30	15	KA80KBZ01100	ESTOPADA KGP-30
4	KA80KBZ01005	TAPA IMPULSION KGP-30	16	KA80KBZ01004	TURBINA 3 PALAS ROSCADA KGP-30
5	KA80KBZ01006	JUNTA TAP IMPULSION KGP-30	17	KA80KBZ01003	DIFUSOR TURBINA KGP-30
6	KA80KBZ01008	JUNTA RACOR KGP-30	18	KA50KBZ01024	TUERCA CIEGA DIFUSOR KGP-30
7	KA80KBZ01009	RACOR MANGUERA KGP-30	19	KA80KBZ01019	TORICA DIFUSOR KGP-30
8	KA80KBZ01007	TUERCA RACOR KGP-30	20	KA80KBZ01002	CUERPO BOMBA KGP-30
9	KA80KBZ01015	ARANDELA AJUSTE TAPA ACOPLE	21	KA80KBZ01200	JUNTA VALVULA KGP-30
10	KA80KBZ01001	TAPA ACOPLE KGP-30	22	KA80KBZ01011	TAPA ASPIRACION KGP-30
11	KA50KBZ01015	TORICA TORNILLO ACOPLE MOTOR	23	KA80KBZ01012	ARANDELA D 8
12	KA50KBZ01021	TORNILLO M8X35	24	KA50KBZ01025	ARANDELA AJUSTE TURBINA