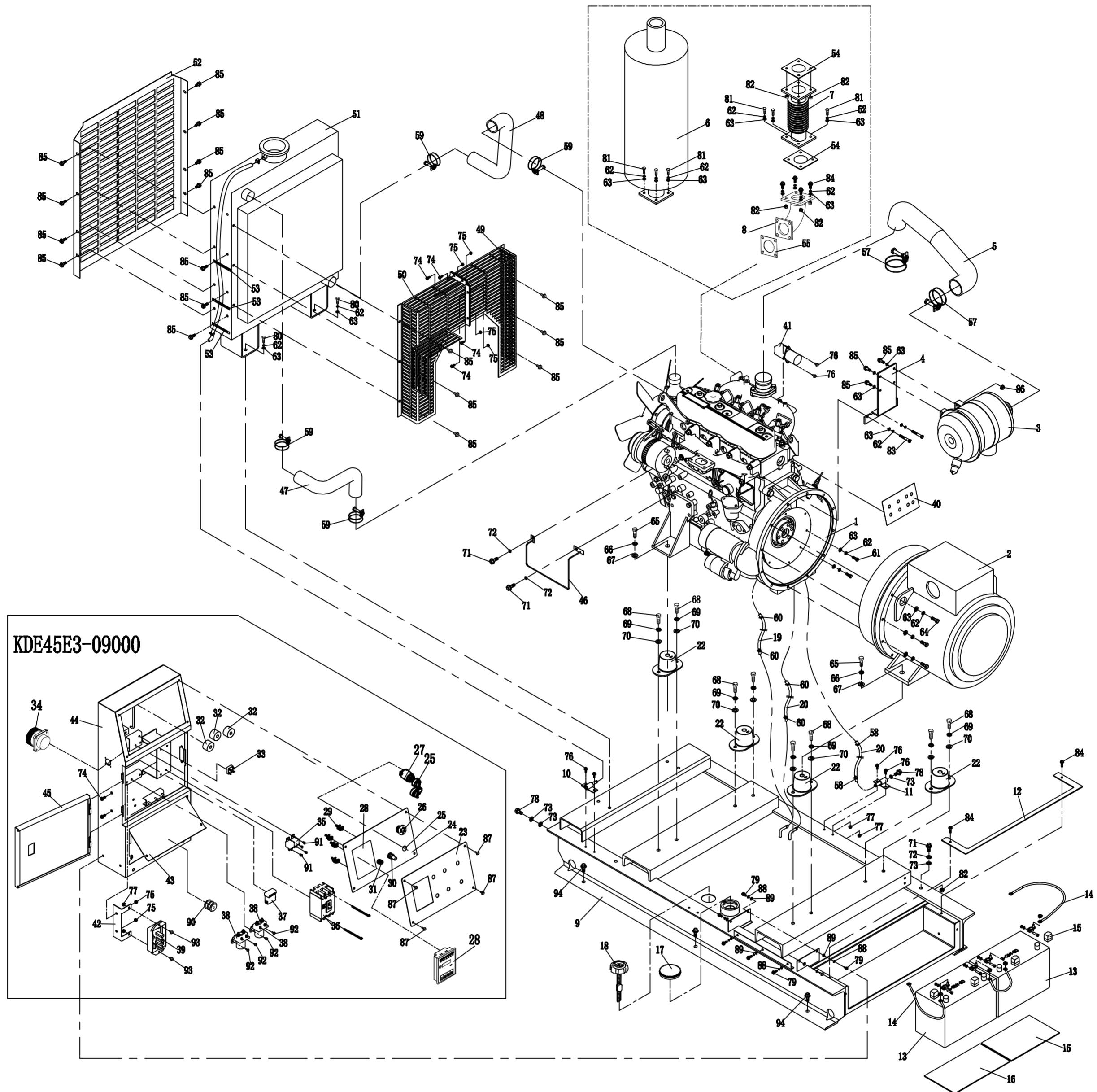


# ASSEMBLY AND PARTS ALBUM

## KDE45E3



KDBE1009-C		1st Revision																	
No.	Code.	Description	Qty.	No.	Code.	Description	Qty.	No.	Code.	Description	Qty.	No.	Code.	Description	Qty.	No.	Code.	Description	Qty.
1	KD4105ZG	Engine	1	21	KM168F-10011	Clamping hoop of oil pipe	1	41	KDE60ST-13700	Turbo worm-type annigrator	1	61	GB/T5783-2000	Bolt M8×20 (Class 10.9)	8	81	GB/T5783-2000	Bolt M8×30	8
2	KFS45	Alternator	1	22	KDE60E3-12000	Shock pad HC70	1	42	KDE100E3-09001	AVR mounting frame	1	62	GB/T93-1987	Spring washer 8	36	82	GB/T6170-2000	Nut M8	9
3	KDE60ST-01200	Air filter	1	23	KDE45-100EA3-13121	PVC label	1	43	KDE35E3-09001	Cover plate of output box	1	63	GB/T95-2002	Plain washer 8	40	83	GB/T5783-2000	Bolt M8×60	2
4	KDE45E3-01010	Air filter bracket	1	24	KDE60EA3-13110	Instrument panel	1	44	KDE60E3-09100b	Electrical cabinet	1	64	GB/T5783-2000	Bolt M8×40 (Class 10.9)	10	84	GB/T5789-1986	Bolt M8×20	6
5	KDE45E3-01001	Air filter pipe	1	25	JK427-1	Key	1	45	KDE100E3-09210	Door plate	1	65	GB/T5783-2000	Bolt M16×40	4	85	GB/T5789-1986	Bolt M8×16	21
6	KDE60E3-10200	Muffler	1	26	RY1B-V4E01R	Emergency stop button	1	46	KDE60ST-13310	Wire rack	1	66	GB/T93-1987	Spring washer 16	4	86	GB/T6177.1-2000	Nut M8	4
7	KDE60E3-10300	Air exhaust pipe 2	1	27	JK427-2	Lock	1	47	KDE60E3-11001	Water inlet pipe of water tank	1	67	GB/T95-2002	Plain washer 16	4	87	GB/T5789-1986	Bolt M6×12	4
8	KDE45E3-10100a	Air exhaust pipe 1	1	28	KP310V.1.0	Intelligent display	1	48	KDE60E3-11002	Water outlet pipe of water tank	1	68	GB/T5783-2000	Bolt M12×16	8	88	GB/T93-1987	Spring washer 6	7
9	KDE60E3-03100	Chassis weldment	1	29	KDE310-13600	Mounting block assembly of display	4	49	KDE60E3-11200	Right guard plate	1	69	GB/T93-1987	Spring washer 12	8	89	GB/T95-2002	Plain washer 6	7
10	KDE60E3-03010	Connector of water drainage pipe	1	30	WX14-11 1K±5%	Voltage-regulator potentiometer	1	50	KDE60E3-11300	Left guard plate	1	70	GB/T95-2002	Plain washer 12	8	90	GB/T95-2002	Insulator	1
11	KDE60E3-03020	Connector of oil drainage pipe	1	31	BX2041	Quadruple fuse	1	51	KDE35-11100	Radiator	1	71	GB/T5783-2000	Bolt M10×16	3	91	GB/T818-2000	Screw M5×10	4
12	KDE60E3-03001a	Pressing plate of battery	1	32	CT-75A/5mA	Transformer	3	52	KDE60E3-11003a	Guard plate of radiator	1	72	GB/T93-1987	Spring washer 10	2	92	GB/T5789-1986	Bolt M5×16	4
13	6-QW-80 12V	Battery	2	33	KBPC2510	Rectifier bridge	1	53	KG240G-01018	Line pressing hook	3	73	GB/T95-2002	Plain washer 10	4	93	GB/T5789-1986	Bolt M6×16	2
14		Battery collet	4	34	Y50X-1608ZK10	8-core aviation receptacle	1	54	KDE60ST-11001	Air exhaust pipe gasket	2	74	GB/T5789-1986	Bolt M5×12	6	94	GB/T5789-1986	Bolt M12×20	6
15	KDE19STA3-13100D	Battery jacket	4	35	HFV4-24V-30/40A	Small-sized relay	2	55	KD4105M118001	Connecting gasket of supercharger	1	75	GB/T6177.1-2000	Nut M5	6	95			
16	KDE35E3-18002	Battery backer	2	36	BO-100EB-3P63A	Breaker	1	56	QC619-1999	Pipe hoop 11	3	76	GB/T5789-1986	Bolt M6×14	7	96			
17	KDE5000T-11200	Fuel tank cover assembly	1	37	BLX10A	Fuse seat	1	57	QC619-1999	Pipe hoop 70-89	2	77	GB/T6177.1-2000	Nut M6	4	97			
18	190ULF	Oil level gauge	1	38	QDC-100-DC24V	DC contactor	2	58	QC619-1999	Pipe hoop 18-25	2	78	GB/T5789-1986	Bolt M10×20	2	98			
19	KDE60E3-14001	Oil inlet pipe	1	39	KI-DAVR-250S	AVR	1	59	QC619-1999	Pipe hoop 38-57	4	79	GB/T5783-2000	Bolt M6×18	7	99			
20	KDE60E3-14002	Oil outlet pipe	1	40	KDE60SS-13503	Grounding copper bus bar	1	60	KM168F-10011	Clamping hoop of oil pipe	4	80	GB/T5783-2000	Bolt M8×16	4	100			

**WUXI KIPOR POWER CO., LTD.**

Beside Jingyi Rd, Third-stage Development Section of Wangzhuang Industry Area, Wuxi High & New Technology Industry Development Zone. TEL: 0086-510-85205041 FAX: 0086-510-85203796