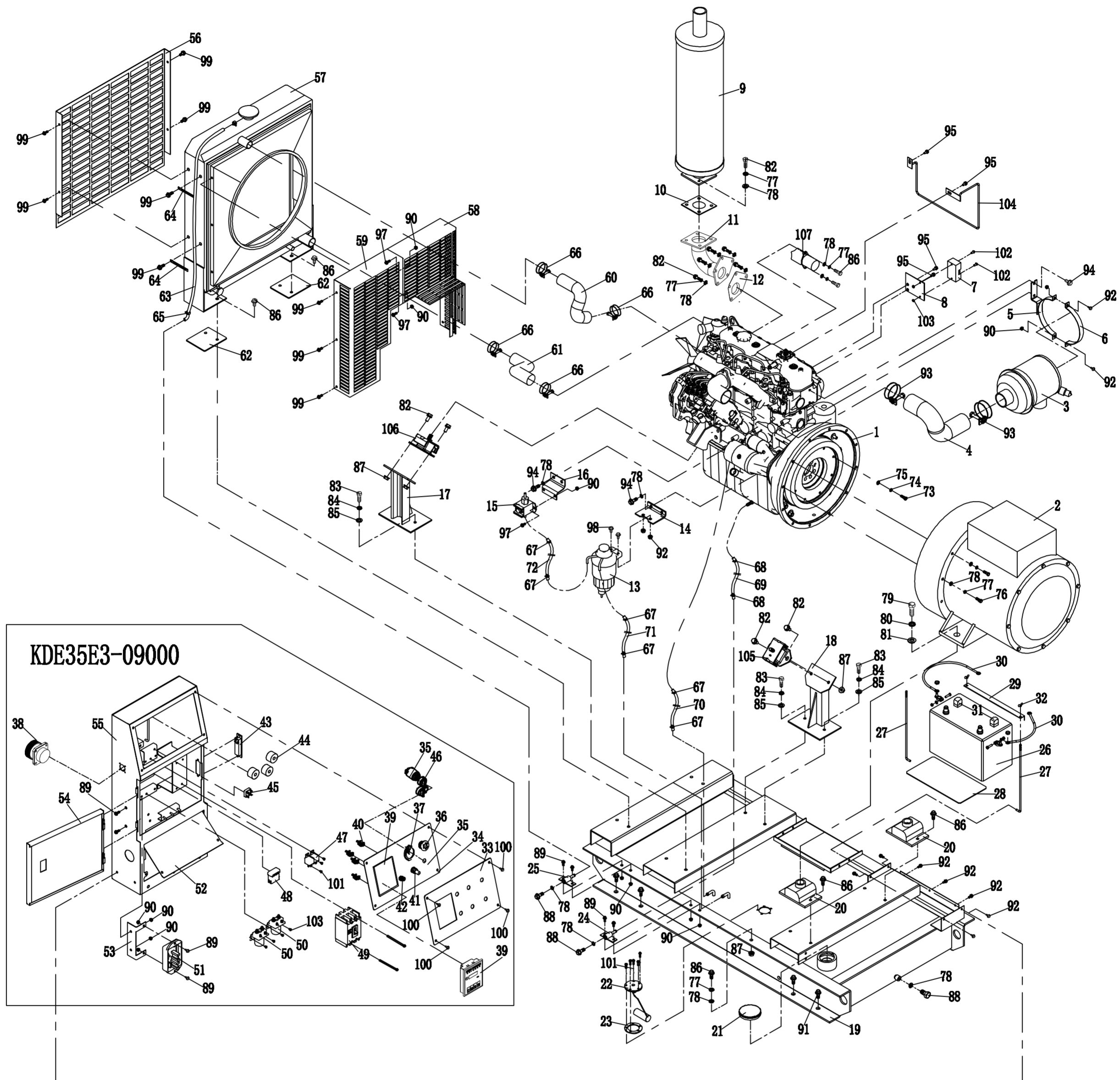


ASSEMBLY AND PARTS ALBUM

KDE35E3



KDBE1010-C		1st Revision																					
No.	Code.	Description	Qty.	No.	Code.	Description	Qty.	No.	Code.	Description	Qty.	No.	Code.	Description	Qty.	No.	Code.	Description	Qty.				
1	KM93ZG	Engine	1	21	KDE5000T-11200	Fuel tank cover assembly	1	41	WX14-11 1K±5%	Voltage-regulator potentiometer	1	61	KDE30ST-11001	Water outlet pipe of water tank	1	81	GB/T95-2002	Plain washer 16	2	101	GB/T818-2000	Screw M5×12	13
2	KFS30	Alternator	1	22	KDE19T3-14040	Oil level sensor	1	42	BX2041	Quadruple fuse	1	62	KDE35E3-14001	Shock pad of water tank	2	82	GB/T5782-2000	Bolt M10×35	8	102	GB/T818-2000	Screw M4×16	2
3	KDE35ST-01200	Air filter	1	23	KDE15SS-14001	Rubber gasket of oil level gauge	1	43	KDE35E3-09300	Door lock	1	63	KDE35E3-14002	Water discharge pipe of water tank	1	83	GB/T5782-2000	Bolt M12×35	4	103	GB/T6177.1-2000	Nut M4	2
4	KDE35E3-01001	Air filter rubber hose	1	24	KDE60E3-03020	Connector of oil drainage pipe	1	44	CT-100A/5mA	Transformer	3	64	KG240G-01018	Line pressing hook	2	84	GB/T93-1987	Spring washer 12	4	104	KDE35ST-13320	Electrical mounting frame 2	1
5	KDE35E3-01030	Air filter bracket	1	25	KDE35E3-03020	Connector of water drainage pipe	1	45	KBPC2510	Rectifier bridge	1	65	QC619-1999	Pipe hoop 11	2	85	GB/T95-2002	Plain washer 12	4	105	KM493-1001100	Bumper Block of left bracket	1
6	KDE35E3-01033	Air filter mounting plate 2	1	26	6-QW-80 12V	Battery	1	46	JK427-1	Key	2	66	QC619-1999	Pipe hoop 38-57	4	86	GB/T5789-1986	Bolt M10×25	11	106	KM493-1001200	Bumper Block of right bracket	1
7	MD-6/A	Grounding copper bus bar	1	27	KDE5000T-03002	Battery pull bar	2	47	HFV4-24V-30/40A	Small-sized relay	2	67	QC619-1999	Pipe hoop 14	6	87	GB/T6177.1-2000	Nut M10	9	107	1751ES-VDC12V	Annihilator	1
8	KDE35E3-01004	Mounting plate of bus-bar	1	28	KDE35E3-18002	Battery backer	1	48	BLX10A	Fuse seat	1	68	QC619-1999	Pipe hoop 22	2	88	GB/T5789-1986	Bolt M10×20	3	108			
9	KDE35E3-10100	Muffler	1	29	KDE35E3-18001	Pressing plate of battery	4	49	BO-100EB-3P50A	Breaker	1	69	KDE35E3-11001	Oil discharge pipe	1	89	GB/T5789-1986	Bolt M6×14	8	109			
10	KDE35E3-10001	Muffler gasket	1	30		Battery collet	2	50	QDC-100-DC12V	DC contactor	2	70	KDE35E3-11002	Oil return pipe	1	90	GB/T6177.1-2000	Nut M6	14	110			
11	KDE35E3-10010	Elbow of muffler	1	31	KDE19STA3-1310001	Battery jacket	2	51	KI-DAVR-250S	AVR	1	71	KDE35E3-11003	Oil inlet pipe	1	91	GB/T5789-1986	Bolt M12×25	8	111			
12	KM493Z-118002	Air outlet gasket of supercharger	1	32	GB/T62.1-2004	Butterfly nut M6	2	52	KDE35E3-09001	Cover plate of output box	1	72	KDE35E3-11004	Oil pipe of oil water separator	1	92	GB/T5789-1986	Bolt M6×18	9	112			
13	DX200M	Oil water separator	1	33	KDE20-40EA3-13121	PVC label	1	53	KDE100E3-09001	AVR mounting frame	1	73	GB/T5782-2000	Bolt M8×20 (Class 10.9)	8	93	QC619-1999	Pipe hoop 51-70	2	113			
14	KDE35E3-01002	Mounting plate of oil water separator	1	34	KDE20-40EA3-13110	Instrument panel	1	54	KDE35E3-09100	Electrical cabinet	1	74	GB/T93-1987	Spring washer 8	8	94	GB/T5789-1986	Bolt M10×16	6	114			
15	KD388-10500	Electrical fuel pump 2	1	35	JK427-2	Lock	1	55	KDE100E3-09210	Door plate	1	75	GB/T95-2002	Plain washer 8	8	95	GB/T5789-1986	Bolt M8×16	4	115			
16	KDE35E3-01003	Mounting plate of electrical fuel pump	1	36	RY1B-V4E01R	Emergency stop button	1	56	KDE35E3-14003	Front cover plate of water tank	1	76	GB/T5782-2000	Bolt M8×40 (Class 10.9)	10	96	GB/T5789-1986	Bolt M8×30	4	116			
17	KDE35E3-01010	Bracket 1	2	37	RY1115Y1 655 12V	Flow meter	1	57	KDE30E-11100	Radiator	1	77	GB/T93-1987	Spring washer 10	19	97	GB/T5789-1986	Bolt M6×12	4	117			
18	KDE35E3-01020	Bracket 2	1	38	Y50X-1608ZK10	8-core aviation receptacle	1	58	KDE35E3-14210	Left guard plate of water tank	1	78	GB/T95-2002	Plain washer 10	26	98	GB/T5789-1986	Bolt M8×20	2	118			
19	KDE35E3-03100	Chassis weldment	2	39	KP310V1.0	Intelligent display	1	59	KDE35E3-14201	Right guard plate of water tank	1	79	GB/T5782-2000	Bolt M16×50	2	99	GB/T5789-1986	Bolt M8×12	12	119			
20	BE160	Shock pad	2	40	KDE310-13600	Mounting block of display	1	60	KDE30ST-11002	Water inlet pipe of water tank	1	80	GB/T93-1987	Spring washer 16	2	100	GB/T5789-1986	Bolt M6×16	4	120			

WUXI KIPOR POWER CO., LTD.

Beside Jingyi Rd, Third-stage Development Section of Wangzhuang Industry Area, Wuxi High & New Technology Industry Development Zone. TEL: 0086-510-85205041 FAX: 0086-510-85203796