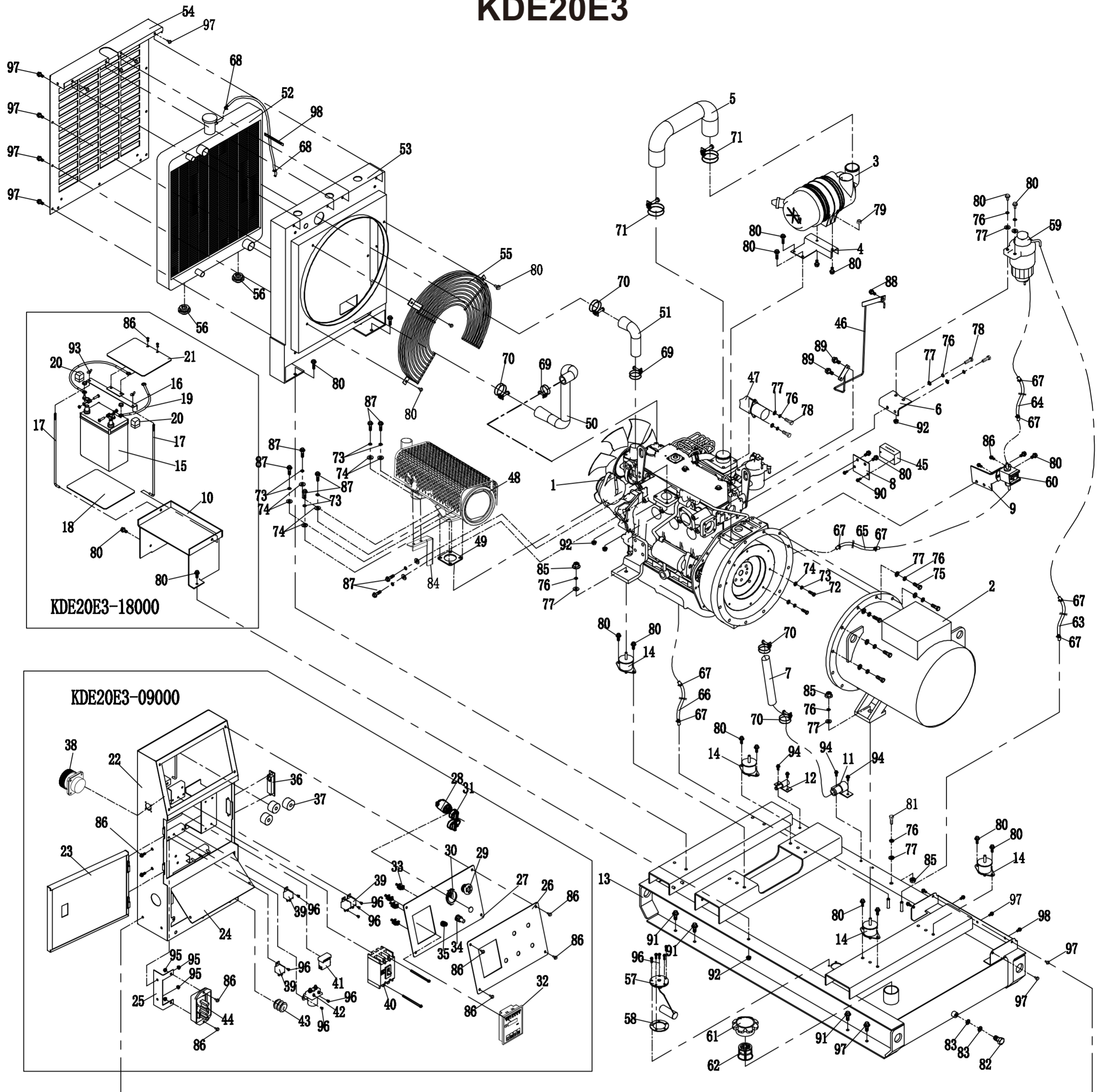


ASSEMBLY AND PARTS ALBUM

KDE20E3



KDBE1008-C		1st Revision																	
No.	Code.	Description	Qty.	No.	Code.	Description	Qty.	No.	Code.	Description	Qty.	No.	Code.	Description	Qty.	No.	Code.	Description	Qty.
1	KD488G	Engine	1	23	KDE100E3-09210	Door plate	1	45	MD-6/A	Grounding copper bus bar	1	67	KM168F-30011	Clamping hoop of oil pipe	8	89	GB/T5789-1986	Bolt M10×12	2
2	KFS20A-4P	Alternator	1	24	KDE3SE3-09001	Cover plate of output box	1	46	KDE15SS-04740	Mounting frame of cable	1	68	QC619-1999	Pipe hoop 11	2	90	GB/T5789-1986	Bolt M5×12	2
3	KDE15SS-01200	Air filter	1	25	KDE100E3-09001	AVR mounting frame	1	47	KDE60ST-13700	Turbo worm-type amnigliator	1	69	QC619-1999	Pipe hoop 25-38	2	91	GB/T5789-1986	Bolt M10×20	8
4	KDE20E3-01001	Air filter bracket	1	26	KDE20-40EA3-13121	PVC label	1	48	KDE20E3-10100	Muffler	1	70	QC619-1999	Pipe hoop 35-51	4	92	GB/T6177.1-2000	Nut M8	7
5	KDE20E3-01002	Inlet pipe of air filter	1	27	KDE20-40EA3-13110	Instrument panel	1	49	KD388-08003	Gasket of air exhaust pipe	1	71	QC619-1999	Pipe hoop 51-70	2	93	GB/T62.1-2004	Butterfly nut M6	2
6	KDE20E3-01003	Bracket of oil-water separator	1	28	JK427-2	Lock	1	50	KDE15SS-11001	Water outlet pipe of water tank	1	72	GB/T5783-2000	Bolt M8×20 (Class 10.9)	8	94	GB/T5789-1986	Bolt M6×20	4
7	KDE20E3-01004	Oil drainage rubber hose	1	29	RY1B-V4E01R	Emergency stop button	1	51	KDE15SS-11002	Water inlet pipe of water tank	1	73	GB/T93-1987	Spring washer 8	12	95	GB/T6177.1-2000	Nut M6	4
8	KDE20E3-01005	Mounting plate of bus-bar	1	30	RY115Y1 Φ55 12V	Flow meter	1	52	KDE20E3-11100	Aluminum radiator	1	74	GB/T97.1-2002	Plain washer 8	12	96	GB/T818-2000	Screw M5×12	11
9	KDE20E3-01010a	Mounting bracket	1	31	JK427-1	Key	2	53	KDE20E3-11200	Rear guard plate of water tank	1	75	GB/T5783-2000	Bolt M10×20 (Class 10.9)	12	97	GB/T9074.17-1988	Bolt M6×18	33
10	KDE20E3-01020	Battery bracket	1	32	KP310V1.0	Intelligent display	1	54	KDE20E3-11300	Front cover plate of water tank	1	76	GB/T93-1987	Spring washer 10	23	98	KG240G-01018	Line pressing hook	2
11	KDE20E3-01030	Connector of oil drainage pipe	1	33	KDE310-13600	Positioning bolt of display	4	55	KDE20E3-11400a	Guard plate of water tank	1	77	GB/T97.1-2002	Plain washer 10	23				
12	KDE3SE3-03020	Connector of water drainage pipe	1	34	WX14-11 1K±5%	Voltage-regulator potentiometer	1	56	KDE15SS-12200	Shock pad of water tank	2	78	GB/T5783-1986	Bolt M10×20	4				
13	KDE20E3-03100	Chassis weldment	1	35	BX2041	Quadruple fuse	1	57	KDE20E3-14200	Oil level sensor	1	79	GB/T6170-2000	Nut M8	2				
14	KDE15SS-12100	Shock pad	4	36	Ms504 left	Fireplug lock	1	58	KDE15SS-14001	Rubber gasket of oil level gauge	1	80	GB/T5789-1986	Bolt M8×20	27				
15	6-QW-45 12V(65AH 300A)	Battery	1	37	CT-50A/5mA	Transformer	1	59	DX200M	Oil water separator	1	81	GB/T5783-2000	Bolt M10×45	1				
16	KDE15SS-03010	Pressing plate of battery	1	38	Y50X-1608ZK10	8-core aviation receptacle	1	60	KD388-10500	Electrical fuel pump	1	82	GB/T5786-2000	Bolt M10×1.25×20	1				
17	KDE15SS-03013	Pull bar of pressing plate	2	39	HFV4-12V-30/40A	Small-sized relay	3	61	KDE5000T-11200	Fuel tank cover assembly	1	83	GB/T97.1-2002 (Copper)	Plain washer 10	2				
18	KDE15SS-03015	Rubber gasket of battery	1	40	B0-100EB-3P30A	Breaker	1	62	KM168F-10004	Strainer of oil filling pipe	1	84	KDE20E3-01006	Muffler bracket	1				
19	Battery collet		2	41	BLX10A	Fuse seat	1	63	KDE20E3-14002	Oil outlet pipe 1	1	85	GB/T6177.1-2000	Nut M10	5				
20	KDE19STA3-13100D1	Battery jacket	2	42	QDC-100-DC12V	DC contactor	1	64	KDE20E3-14003	Oil outlet pipe 2	1	86	GB/T5789-1986	Bolt M6×16	15				
21	KDE15SS-03014	Insulating cover of battery	1	43		Insulator	1	65	KDE20E3-14004	Oil outlet pipe 3	1	87	GB/T5789-1986	Bolt M8×30	4				
22	KDE3SE3-09100	Electrical cabinet	1	44	KI-DAVR-250S	AVR	1	66	KDE15SS-14016	oil inlet pipe 1 of oil tank	1	88	GB/T5789-1986	Bolt M8×16	9				

WUXI KIPOR POWER CO., LTD.

Beside Jingyi Rd, Third-stage Development Section of Wangzhuang Industry Area, Wuxi High & New Technology Industry Development Zone. TEL: 0086-510-85205041 FAX: 0086-510-85203796