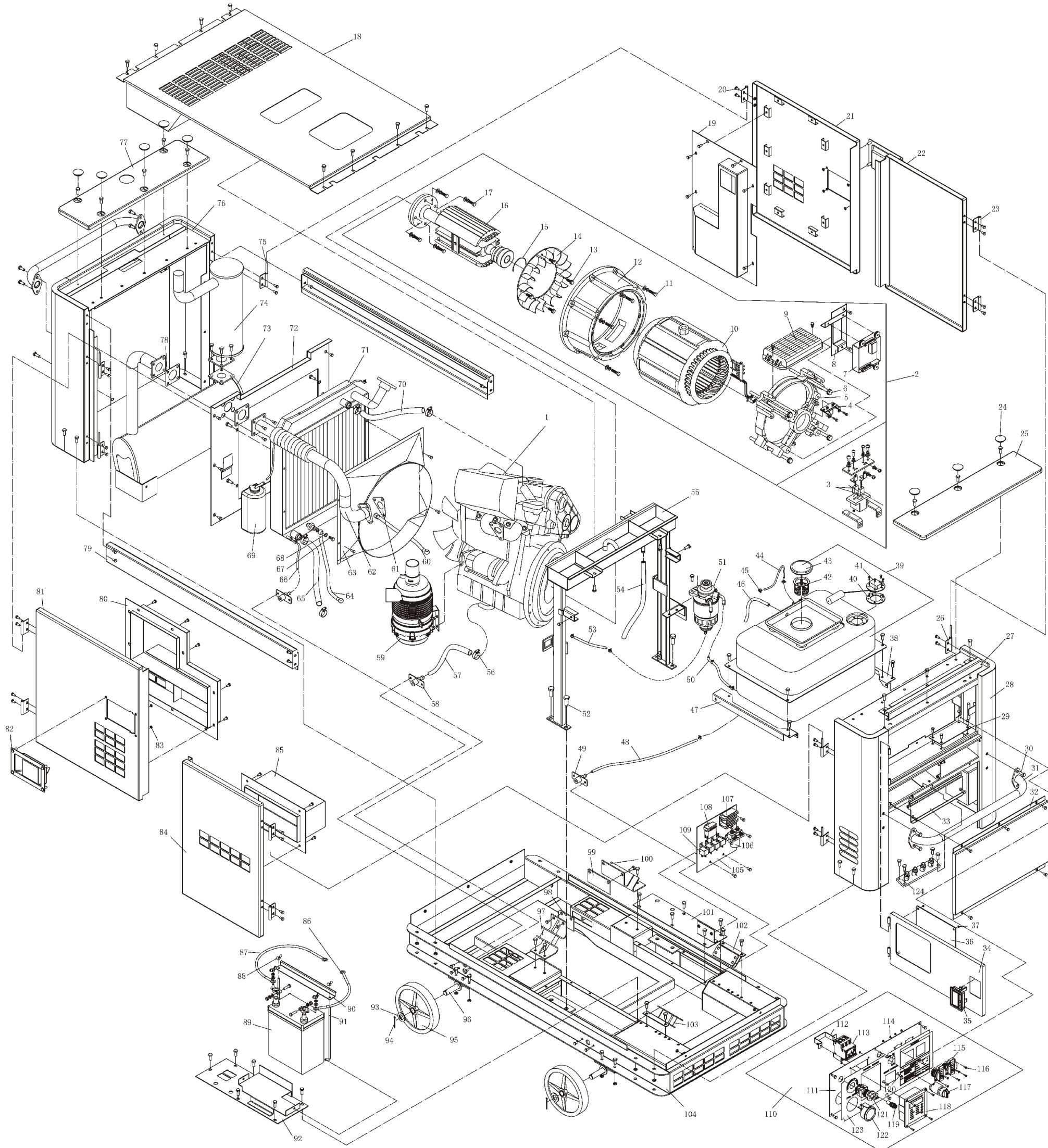


ASSEMBLY AND PARTS ALBUM

KDE19STA3



No.	Part.No	Description	Qty.	No.	Part.No	Description	Qty.	No.	Part.No	Description	Qty.	No.	Part.No	Description	Qty.
1	KM376AG-1000000	Engine assembly	1	33	KDE19ST-04002	Junction box cover board	1	65	KDE19T3-10003	Outlet water pipe of water tank	1	97	KDE19T3-12200	Right damping cushion of engine	1
2	KDE19T3-02000	Motor assembly	1	34	KDE19ST-04300	Meter door welding	1	66	KD19T3-10004	Drain water pipe of water tank	2	98	KDE19T3-12001	Suspension right backing board of diesel engine	1
3	KT245-03001	Carbon brush	2	35	KDE12E-08350	Door lock	1	67	KM376G-1013102	Bolt	1	99	KDE19T3-12002	Suspension left backing board of diesel engine	1
4	KT245-03100	Carbon brush subassembly	1	36	KDE19ST-04005	Organic glass	1	68	JB982-1977	Gasket	7	100	KDE19T3-12300	Left damping cushion of engine	1
5	KT245-00002	Back-end cover	1	37	GB/T6170-2000	Nut M6	4	69	KDE19T3-10001	Antifreeze pot	1	101	KDE19ST-03020	Electric fixing board welding	1
6	GB/T5783-2000	Bolt M10×220	4	38	KDE19T3-14016	Left supporting board of oil tank	1	70	KDE19T3-10002	Inlet water pipe of water tank	1	102	KDE19ST-12100	Damping cushion (1) of generator	1
7	PLY-MB3-C	Smart control module	1	39	KDE19T3-14000	Oil tank assembly	1	71	KDE19T3-10200	Radiator Assembly	1	103	KDE19ST-12200	Damping cushion (2) of generator	1
8	KDE19ST-02100	Module fixed bracket	1	40	KDE19T3-14018	Rubber gasket	1	72	KDE19ST-10200	Clapboard welding	1	104	KDE19ST-03100	Chassis welding piece	1
9	AVR-15-3	Automatic voltage regulator	1	41	KDE19T3-14017	Oil mass sensor	1	73	KDE19ST-11100	Muffler assembly	1	105	KDE16T3-13601	Relay bottom board	1
10	KT270-020001	Stator assembly	1	42	KM168F-10004	Oiling filter screen	1	74	KDE19ST-11200	Muffler welding piece	1	106	QDC-100	Preheat relay	1
11	GB/T5782-2000	Bolt M8×35	8	43	KDE19T3-14200	Oil Tank cover	1	75	KDE19ST-07020	Hinge (2)	4	107	CDQ-36	Charging adjuster	1
12	KT270-00001	Back-front cover	1	44	KDE19T3-14002	Return oil pipe of tank	1	76	KDE19ST-06100	Back boarding welding	1	108	BX2041	Four line fuse box	1
13	GB/T5788-2000	Bolt M8×35	4	45	QC/T619-1999	Clip 8	11	77	KDE19ST-06200	Cover board welding of back boarding	1	109	HFV4 12V 20A	Small type relay	4
14	KT270-00003	Fan	1	46	KDE19T3-14006	Drain oil pipe of oil pan	1	78	KDE19T3-11001	Gasket of exhaust pipe (asbestos)	2	110	KDE19STA3-13100E	Instrument assembly	1
15	GB/T894-1986	Bearing retaining ring	1	47	KDE19T3-14015	Right supporting board of tank	1	79	KDE19ST-08001	Decorative board of top cover	2	111	KDE19STA3-13110E	Control panel	1
16	KT270-01000	Rotor assembly	1	48	KDE19T3-14011	Drain oil pipe of tank	1	80	KDE19ST-07300	Air line welding piece of door board (1)	1	112	KDE16T3-13103	Breaker bracket	1
17	GB/T5782-2000	Bolt M10×25	4	49	KDE60ST-03020	Drain fuel pipe welding	2	81	KDE19ST-07400	Door board (1) assembly	1	113	DZ47-63/3P C20	Breaker	1
18	KDE19ST-08100	Coping welding	1	50	KDE19T3-14009	Outlet oil pipe of tank	1	82	KDE35ST-07100-M	Door lock assembly	2	114	GB/T6170-2000	Nut M4	14
19	KDE19ST-07100	Air line welding piece of door board (2)	1	51	DX200M	Oil and water separator assembly	1	83	GB/T6170-2000	Nut M8	26	115	16A 250V	E-type receptacle	2
20	GB/T5788-2000	Bolt M6×12	107	52	GB/T5788-2000	Bolt M2×20	4	84	KDE19ST-07700	Door board (4) assembly	1	116	GB/T819.1-2000	Screw M4×14	18
21	KDE19ST-07500	Door board (2) assembly	1	53	KDE19T3-14013	Delivery oil pipe of oil tank	1	85	KDE19ST-07200	Air road welding piece of door board (4)	1	117	JK427	Ignition switch	1
22	KDE19ST-07600	Door board (3) assembly	1	54	KDE19T3-05002	Drain water pipe	1	86	KDE19ST-13210(B)	Cathode wiring of battery	1	118	PLY-MB3-D	Smart display screen	1
23	KDE19ST-07012	Fixing plate	8	55	KDE19ST-05000	Center pillar assembly	1	87	KDE19ST-13210(R)	Anode wiring of battery	1	119	BX210C	Fuse seat	1
24	KDE35ST-04001	Waterproof cover	8	56	QC/T619-1999	Clip 25	12	88	GB/T62-1988	Butterfly shaped nut M6	2	120	GB/T818-2000	Screw M4×12	2
25	KDE19ST-04200	Front column cover board welding	1	57	KDE19T3-01004	Oil Draining Pipe	1	89	65AH-12V	Battery	1	121	HVW411ER	Urgent stop button	1
26	KDE19ST-07010	Hinge (1)	4	58	KDE60ST-03010	Drain-oil Pipe Welding	1	90	KDE19T3-03002	Pressed board of battery	1	122	8111-12V	Oil meter	1
27	KDE19ST-04010	Decorative plate welding	1	59	KM376AG-1109000	Air Cleaner Assembly	1	91	KDE19T3-03003	Pressed board bolt	2	123	KDE19STA3-13120E	PVC Label	1
28	KDE19ST-04100	Front column welding	1	60	KM376-100	Oil tube	1	92	KDE19ST-03010	Battery supporting welding	1	124	KDE16T3-13500	Output board	1
29	KDE19ST-04004	Cover board	1	61	KDE14T-11002	Exhaust air pipe Gasket	1	93	GB/T97.1-2002	lat washer	4				
30	GB/T5788-2000	Bolt M8×16	76	62	KDE14T-11200	Flexible exhaust air pipe assembly	1	94	GB/T91-2000	Cotter pin 3	4				
31	KDE19ST-04020	Handle welding	2	63	KDE16T3-10200	Radiator Assembly	1	95	KDE19T3-03310	Cartwheel	4				
32	KDE19ST-04001	Front cover board	1	64	KM376-200	Oil tube	1	96	KDE19ST-03200	Wheel and axle welding piece	2				

KIPOR POWER CO., LTD.

Beside Jin gyi Rd, Th ird-stage D evelopmen t Section o f Wangzhuang In dustry Area, Wu xi High & N ew Technology Industry D evelopmen t Zone. TEL: 0086-510-85205041 FAX: 0086-510-85203796