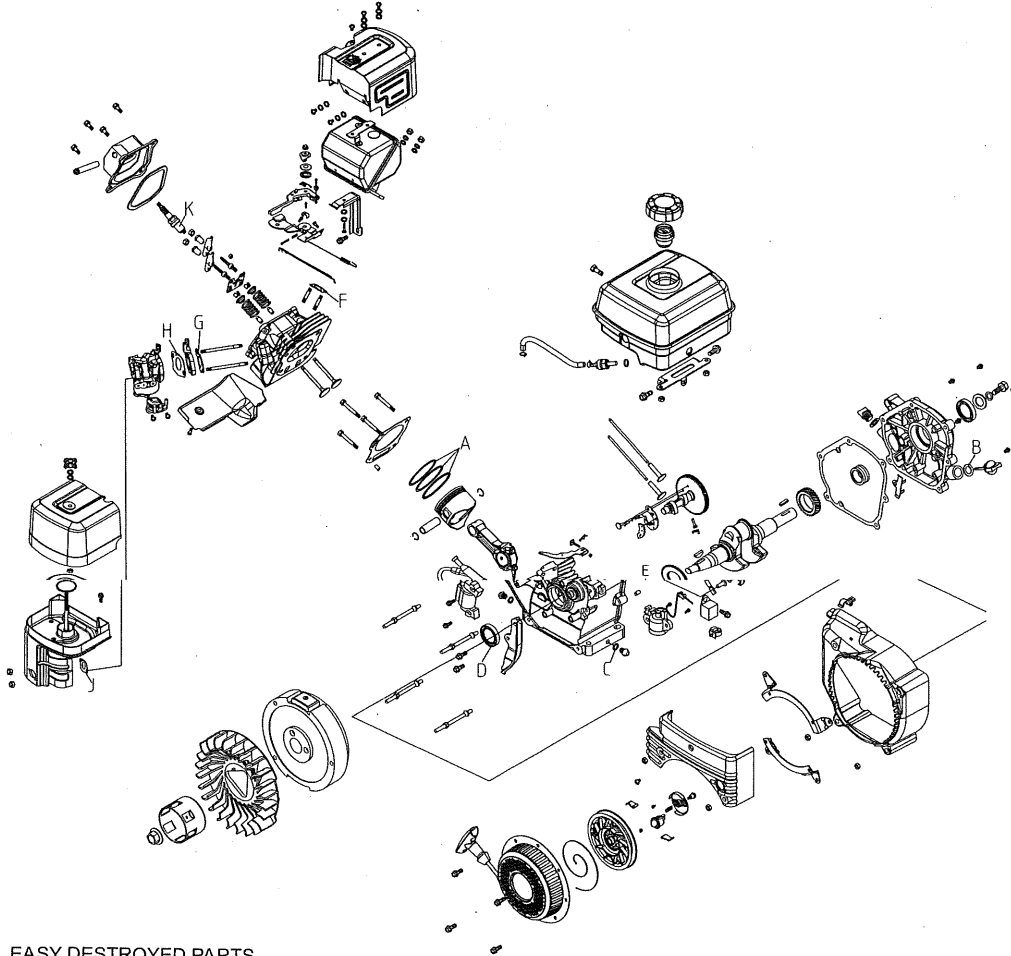


ASSEMBLY AND PARTS DRAWING

GK170 GK205



EASY DESTROYED PARTS

Ref. No.	Part. No.	Description	Qty.
A	KG170-04100T	Piston ring	1
B	KG160-01016	Oil dipstick gasket	2
C	KG160-01008	Oil drain plug gasket	2
D	KG160-01017	Oil seal	2
E	GB/T276-1994	Balling bearing 6205	2
F	KG160-02014	Exhaust pipe gasket	1
G	KG160-02013	Inlet pipe gasket	1
H	KG160-02018	Carburetor gasket A	1
I	KG160-07100a	Filter element unit	1
J	KG160-07007	Carburetor washer	1
K	QC/T430-1999	Spark plug WR7DC	1

FASTENING TORQUE OF MAIN BOLT & NUT (Unit: N.m)

Ref. No.	Description	Torgue
①	Connecting rod bolt	14-16
②	Flywheel nut	80-90
③	Crankcase cover bolt	20-23
④	Cylinder cover bolt	28-32
⑤	Rockershaft bolt	20-23

WUXI KIPOR POWER CO., LTD.

Beside Jingyi Rd, Third-stage Development Section of Wangzhuang Industry Area, Wuxi High & I
Technology Industry Development Zone. TEL: 0086-510-85205041 FAX: 0086-510-85203796

