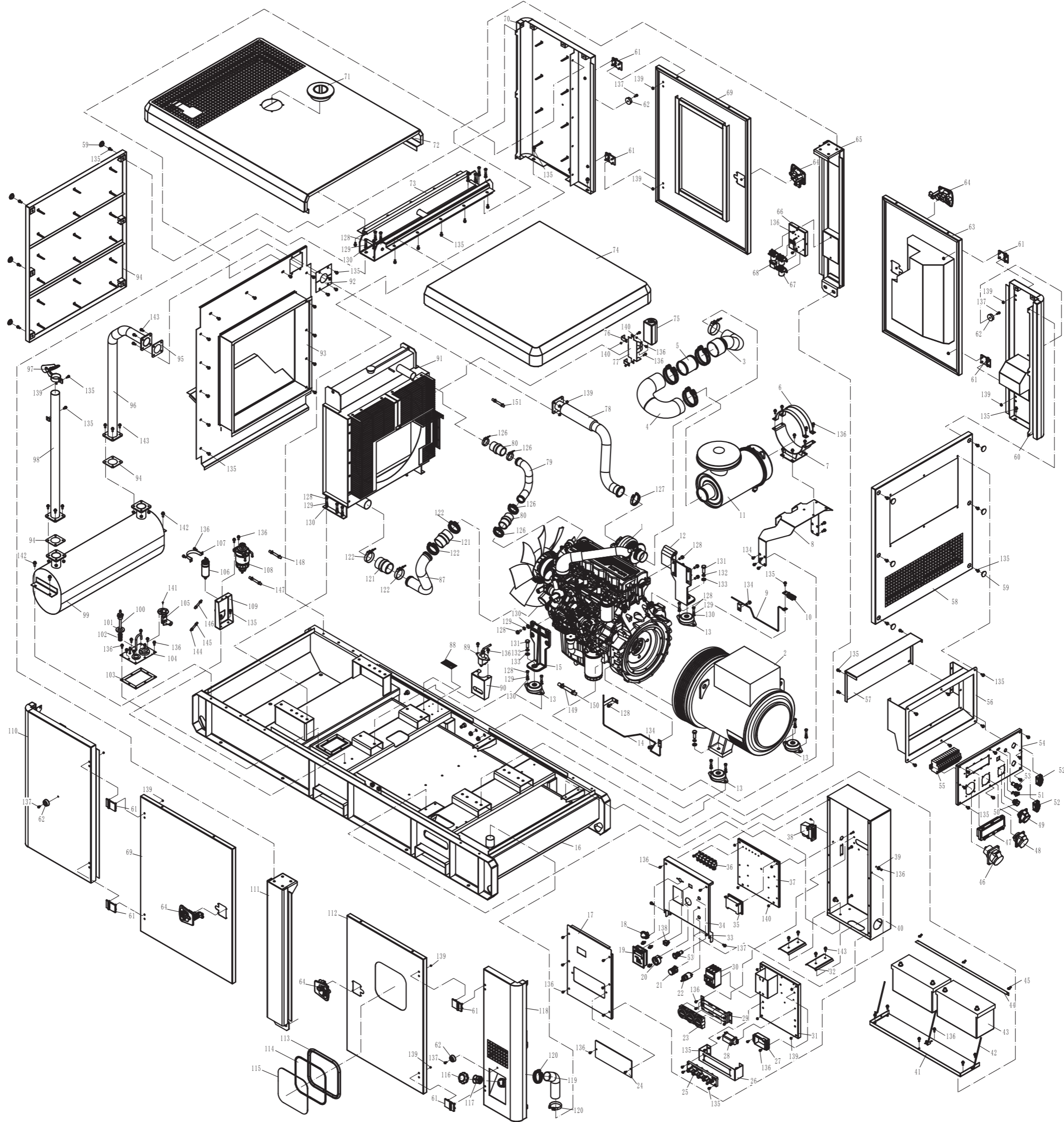


# ASSEMBLY AND PARTS ALBUM

## KDE85S3



No.	Part No.	Description	Qty.	No.	Part No.	Description	Qty.	No.	Part No.	Description	Qty.	No.	Part No.	Description	Qty.	No.	Part No.	Description	Qty.					
1	KD4114Z	Engine assembly	1	31	KDE175SS3-0913000	Mounting plate of air switch	1	61	CL226	Hinge (shengjiu)	8	91	KDE118E3-1110000	Water tank assembly	1	121	KDE415E3-1100009	Rubber connector of water pipe 770	2	151	KDE118SS-1100001	Water drain pipe of water tank	1	
2	KFS80	Generator assembly	1	32	KDE175SS3-0910002	Strengthening pressing plate	2	62	KGE1000T-06700	Shock pad of chassis foot	4	92	KDE70SSP-0600001	Mounting plate of air exhaust part	2	122	QC/T699-1999	T type elastic clamping hoop 75	4	152	QC/T699-1999	T type elastic clamping hoop 110	3	
3	KDE118SSP-0100001a	Air filter rubber pipe(1)	1	33	KDE285E3-09304	Washer	2	63	KDE118SS-0720000	Door panel (2)	1	93	KDE70SS-0610000	Water tank baffle plate	1	123					153			
4	KDE118SSP-0100002	Air filter rubber pipe(2)	1	34	KDE175SSP3-0912000-a	Instrument panel-a	1	64	MESAN(014-1-12-03-01)	Door lock	4	94	KDE118SS-0630000	Rear wall mounting plate	1	124							154	
5	KDE118SSP-0100003	Connection pipe of air filter rubber pipe	1	35	C2002	Forthrust electric governor	1	65	KDE118SS-0520000	Right pillar	1	95	KDE60ST-11001	Air exhaust pipe gasket (1)	3	125							155	
6	KDE70E3-0100001	Air filter mounting plate	2	36	HFV4-DC24V-012	Mini DC relay	6	66	KDE175SSP3-0921000	Mounting plate of DC contactor	1	96	KDE70SSP-1020000	Muffler connection pipe (1)	1	126	QC/T699-1999	T type elastic clamping hoop 60	4	156				
7	KDE70E3-0100003	Air filter supporting plate	1	37	KDE175SSP3-0913000	Mounting plate of electrical equipment	1	67	8211-12V	DC contactor	2	97	50060 (福州康信)	O&O water-proof cap	1	127	KDE70E3-0110001	V style T type clamping hoop	1	157				
8	KDE70E3-0120000	Air filter mounting frame	1	38	R-A-H-D-P-25	Heavy duty connector assembly (HS cruse)	1	68	BX2041C	Fuse case	1	98	KDE70SSP-1030000	Muffler connection pipe (2)	1	128	GB/T5783-2000	Bolt M12x25-10.9S	30	158				
9	KDE70SSP-0120000	Wire rack(2)	1	39	KDE285E3-09301	Panel stop dog	2	69	KDE118SS-0730000	Door panel (3)	2	99	KDE70SSP-1010000	Muffler body	1	129	GB/T93-2000	Spring washer 12	30	159				
10	KDE30SS-13503	Grounding copper bus bar	1	40	KDE118SS-0910000	Bottom plate of electrical control cabinet	1	70	KDE118SS-0620000	Rear wall right side plate	1	100	KDE70SSP-0340000	Oil outlet pipe connector	1	130	GB/T97.1-2002	Plain washer 12	30	160				
11	KDE75ST-01200	Air filter	1	41	KDE118SS-1700001	Battery pallet	1	71	SXG-130	Water tank cover assembly	1	101	QC/T638-2000	Copper seal washer 30	1	131	GB/T5783-2000	Bolt M16x45-10.9S	4	161				
12	KDE175E3-1200001	Engine left supporting leg	1	42	KDE5000T-03002	Battery pull bar	3	72	KDE118SS-0820000	Top cover plate (2)	1	102	KDE118E3-14003	Upper oil pipe strainer	1	132	GB/T93-2000	Spring washer 16	4	162				
13	MZB-1000	Shock pad	4	43	120AH	Battery	2	73	KDE118SS-0530000	Hanger plate	1	103	KDE285SS3-0300001	Rubber pad at oil filling port	1	133	GB/T97.1-2002	Plain washer 16	4	163				
14	KDE70SSP-0120000	Wire rack(2)	1	44	KDE118SS-1700002	Pressing plate	1	74	KDE118SS-0810000	Top cover plate (1)	1	104	KDE118SS-0320000	Fuel inlet/outlet cover plate	1	134	GB/T5789-1986	Bolt M10x25	10	164				
15	KDE175E3-1200002	Engine right supporting leg	1	45	GB/62-88	Butterfly nut M6	3	75	KDE19T3-10001	Antifreeze fluid tank	1	105	YWJ-03	Oil lever sensor	1	135	GB/T5789-1986	Bolt M8x25	98	165				
16	KDE118SS-0310000	Chassis weldment	1	46	Y-135(1354106)	Three-phases 5-core plug (63A)	1	76	KDE285SS3-1110001	Pendant of spill water kettle bracket	2	106	JJEP-34A	Fuel electric pump	1	136	GB/T5789-1986	Bolt M6x20	48	166				
17	KDE175SS3-0912000	Cover plate of electrical control cabinet	1	47	M12断路器保护盒	Protective case of breaker	1	77	KDE285SS3-1110000	Spill water kettle bracket	1	107	KDE175SSP3-0300001	Electric pump clamp hoop	1	137	GB/T5789-1986	Bolt M6x25	6	167				
18	DV24V 10W	Panel illuminated light	1	48	Y-125(1254106)	Three-phases 5-core plug (62A)	1	78	KDE118SSP-1010000	Air exhaust pipe	1	108	DX200	Oil water separator	1	138	RF-1004	Rocker switch	1	168				
19	KP310	Generator set controller	1	49	Y-115(1154106)	Three-phases 5-core plug (16A)	1	79	KDE70E3-1100001	Water inlet pipe of water tank (stainless steel pipe)	1	109	KDE70SSP-0330000	Mounting plate of oil water separator	1	139	GB/T6177.1-2000	Nut M8	48	169				
20	DV24V 10W	Fuel gauge	1	50	Y50X-160BZK10	Aviation socket	1	80	KDE415E3-1100008	Rubber connector of water pipe (1)	2	110	KDE118SS-0610000	Rear wall left side plate	1	140	GB/T6177.1-2000	Nut M6	4	170				
21	RV24YN20S-102	Voltage regulation potentiometer	1	51	KP310-TTL	Communication connector	1	81	KDE118SSP-1110000	Air inlet pipe (1)	1	111	KDE118SS-0510000	Left pillar	1	141	GB/T5789-1986	Bolt M5x16	5	171				
22	JK427	Ignition switch	1	52	250V 30A	Honda single-phase 3-core socket	2	82			112	KDE118SS-0710000	Door panel (1)	1	142	GB/T5789-1986	Bolt M10x20	4	172					
23	Xinsu250/5MA	Current transformer(match 310)	3	53	CE4T-10R-11	Emergency stop button	2	83			113	KDE70SSP-0700002	Seal ribbon	1	143	GB/T5789-1986	Bolt M8x35	16	173					
24	KDE175SSP3-0910001	Methylmethacrylate cover plate	1	54	KDE175SS3-0932000	Output panel	1	84			114	KDE70SSP-0700003	Rubber inlay ribbon	1	144	KDE118SS-1400001	Oil inlet pipe of oil tank (1)	1	174					
25	M10Output terminal block	Output terminal block	1	55	8203-C63 8203-C62 8203-C16 8201-C32	Mini breaker assembly	1	85			115	KDE70SSP-0700001	Perspective window	1	145	QC/T621-1999	Steel bell spring hoop (13-19)	10	175					
26	KDE70SSP-0900001	Output mounting plate	1	56	KDE118SS-0920000	Rear hood of output panel	1	86			116	KDE35ST-14020	Oil tank cover (with keys)	1	146	KDE118SS-1400004	Oil return pipe of oil tank	1	176					
27	PLY-DAVR-250S/G	AVR	1	57	KDE118SS-0900001	Output case	1	87	KDE70E3-1100002	Water inlet pipe of water tank (stainless steel pipe)	1	117	KDE70SSP-14006	Oil tank strainer	1	147	KDE118SS-1400002	Oil inlet pipe of oil tank (2)	1	177				
28	KDE20RSS3-13042	ATS terminal block	1	58	KDE118SS-0430000	Front wall mounting plate	1	88	KDE118SS-F000005	Generator set numbering aluminum board	1	118	KDE118SS-0410000	Front wall left side plate	1	148	KDE118SS-1400003	Oil inlet pipe of oil tank (3)	1	178				
29	KDE175SS3-0910001	Transformer bracket (match 310)	1	59	KDE35ST-04001-M	Water-proof cover	12	89	BOSCH 250A 24V	Battery breaker	1	119	KDE23SS3-0300002	Connection rubber pipe of oil filler port	1	149	KDE118SS-1400005	Oil drain pipe	1	179				
30	ABB T3N	Main breaker	1	60	KDE118SS-0420000	Front wall right side plate	1	90	KDE118SS-0330000	Mounting plate of battery breaker	1	120	QC/T699-1999	T type elastic clamping hoop 65	2	150	QC/T619-1999	Worm drive type hose hoop (16-25)	2	180				